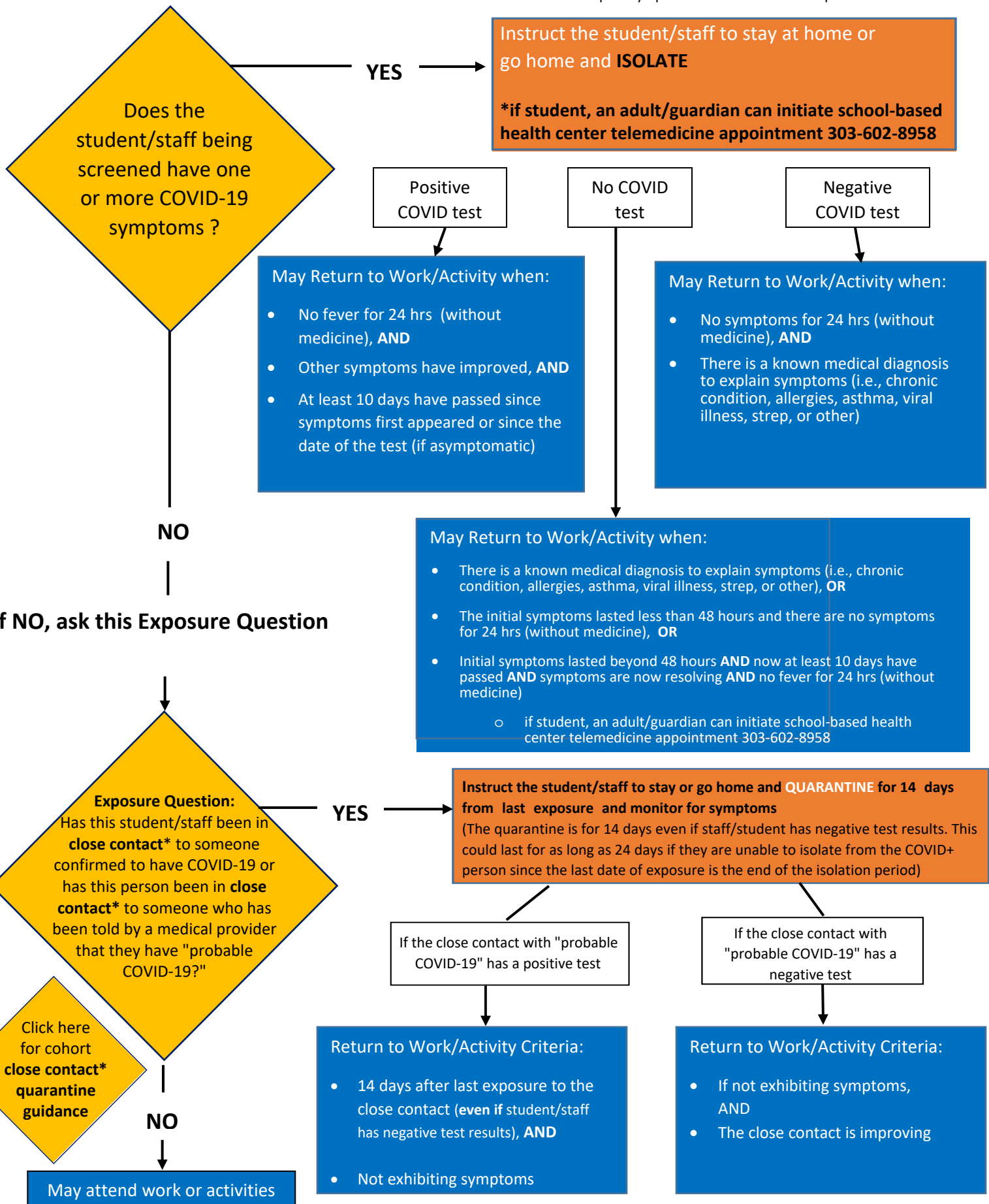


# COVID-19 Screening and COVID-19 Testing Decision Tree

11.02.2020 (clarification to quarantine information)

\*This document is frequently updated and should not be printed



\*Definition of a close contact: Someone who was within 6 feet of an infected person for at least 15 minutes starting from 2 days before illness onset (or, for asymptomatic patients, 2 days prior to specimen collection) until the time the patient is isolated.