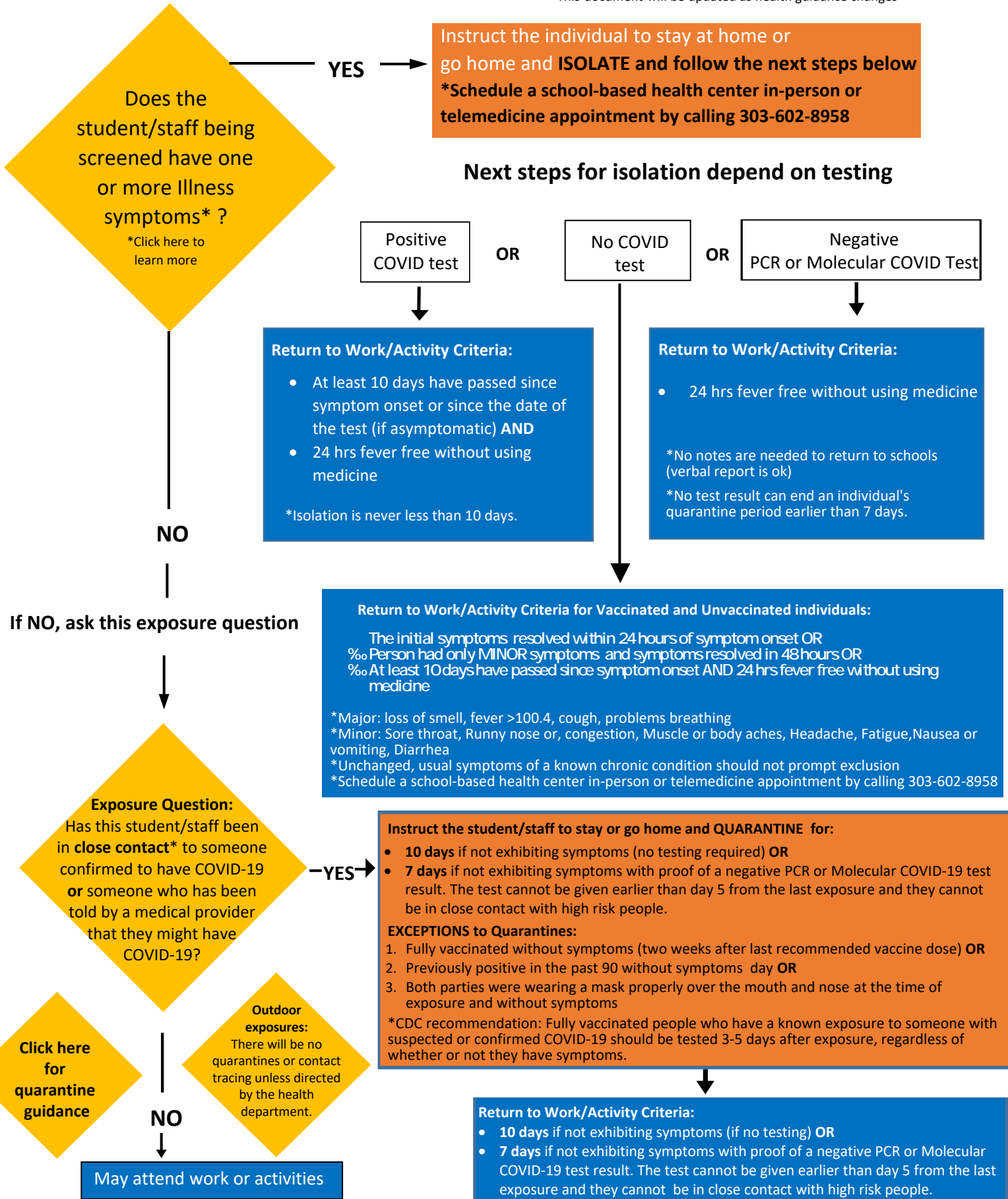


# COVID-19 Screening and COVID-19 Testing Decision Tree

08.09.2021: minor format edits and updated to align with updated CDPHE guidance including quarantines protocols. \*This document will be updated as health guidance changes



\*Definition of close contact: Children who were within 3 feet (adults 6 feet) of an infected person for a cumulative total of 15 minutes or more over a 24-hour period. Fully vaccinated people who have a known exposure to someone with suspected or confirmed COVID-19 should be tested 3-5 days after exposure, regardless of whether or not they have symptoms.